



## 62 South Street, Oyster Bay, New York

### PROPERTY INFORMATION

**Rentable SF:** 775 SF – Suite 201  
417 SF – Suite 202  
654 SF – Suite 203  
1,071 SF – Suites 202/203

**Rental Price:** \$21.50 per SF

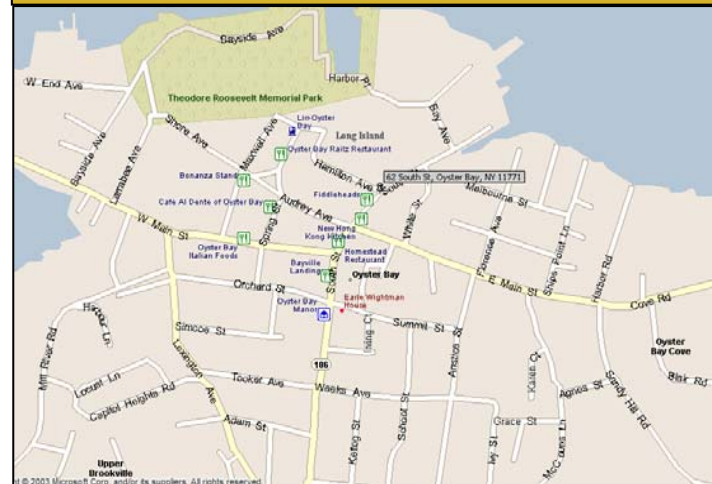
**Utilities:** Separately Metered



### FEATURES

- Private Parking, Adjacent to Municipal
- In the heart of historic downtown Oyster Bay
- 6.4 miles to LI Expressway
- Walk to restaurants banks, LIRR, parks, waterfronts, post office & Town Hall

### LOCATION:



### FOR FURTHER INFORMATION:

**Bert Donley**  
516-313-6110

**Bernard Del Bello III**  
516-220-0838

### IN COOPERATION WITH:

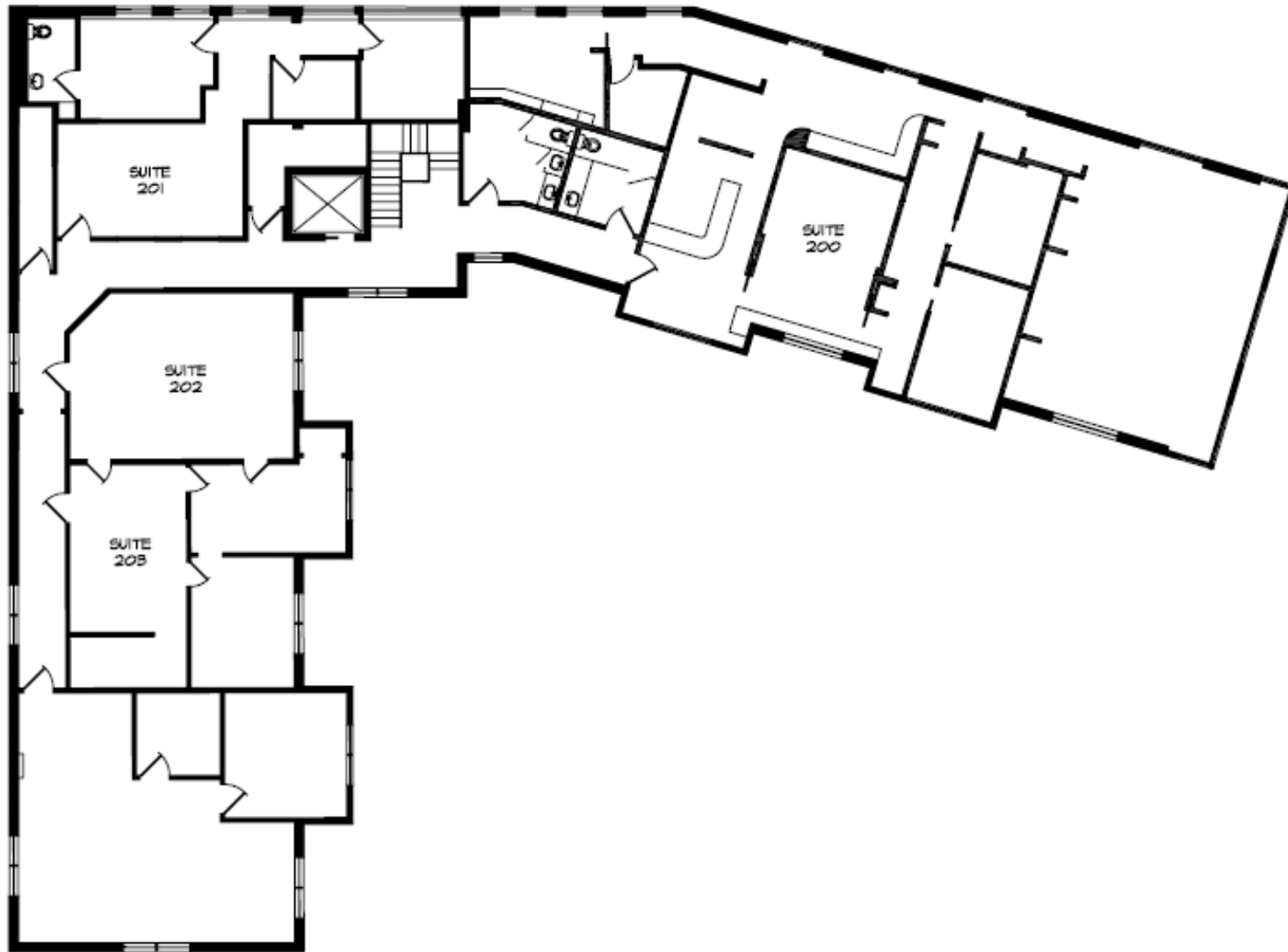


Windsor Commercial Real Estate \* 1025 Old Country Road, Suite 407 \* Westbury, NY 11590 \* T: 516.512.6100 F: 516.512.6101 \* [www.WindsorCRE.com](http://www.WindsorCRE.com)

All information furnished regarding either property for sale, rental or the financing is from sources deemed reliable. No representation is made as to the accuracy thereof and submitted subject to errors, change of price, rental rates or other conditions, prior sale, lease or financing, or withdrawal without notice. All areas and dimensions are approximate.



## 62 South Street, Oyster Bay, New York



Windsor Commercial Real Estate \* 1025 Old Country Road, Suite 407 \* Westbury, NY 11590 \* T: 516.512.6100 F: 516.512.6101 \* [www.WindsorCRE.com](http://www.WindsorCRE.com)

All information furnished regarding either property for sale, rental or the financing is from sources deemed reliable. No representation is made as to the accuracy thereof and submitted subject to errors, change of price, rental rates or other conditions, prior sale, lease or financing, or withdrawal without notice. All areas and dimensions are approximate.